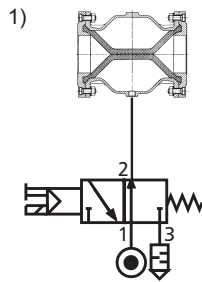
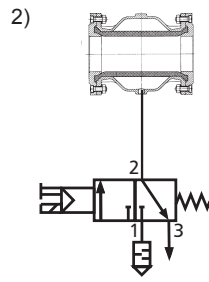


Comandi / Controls



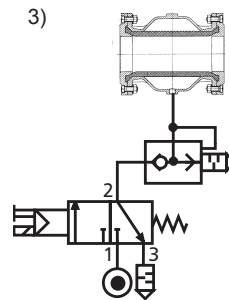
Valvola elettromagnetica a 3/2 vie aperta senza corrente (NO)

3/2-way solenoid valve currentless open (NO)

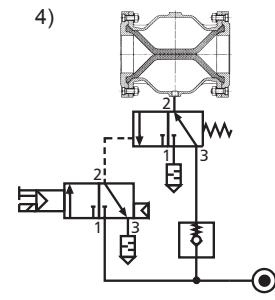


In caso di aspirazione: Pompa per vuoto al collegamento 3

Conveying by suction: vacuum-pump at connection 3

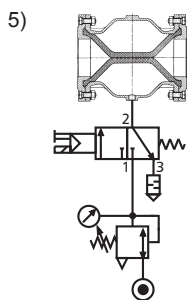


Valvola elettromagnetica a 3/2 vie (NC) con valvola di decompressione rapida
3/2-way solenoid valve (NC) with quick exhaust valve

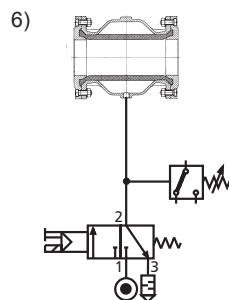


In caso di caduta di pressione/corrente: la valvola a manicotto rimane chiusa

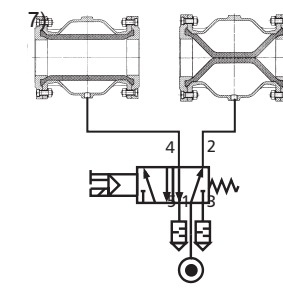
For pressure power shut down: Pinch valve remains in closed position.



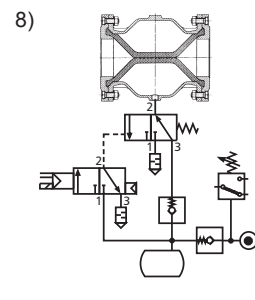
Valvola elettromagnetica a 3/2 vie (NC) senza corrente chiusa con riduttore di pressione
3/2-way solenoid valve (NC) normally closed with pressure regulator



Valvola elettromagnetica a 3/2 vie senza corrente chiusa (NC) con interruttore a pressione
3/2-way solenoid valve normally closed (NC) with pressure switch



Valvola elettromagnetica a 5/2 vie per controllo di commutazione
5/2-way solenoid valve for various regulation



In caso di caduta di pressione/corrente: la valvola elettromagnetica si può chiudere anche in posizione di apertura (accumulatore di aria).
For pressure power shut down: Pinch valve can close in open position (air tank).

Tempi di apertura e chiusura delle valvole a manicotto Opening and closing times of the Pinch Valve

Portata nominale (mm)	Tempo di apertura (sec.)	Tempo di chiusura (sec.)
Diametro (mm)	Opening time (sec.)	Closing time (sec.)
10	<1,0	<1,0
15	<1,0	<1,0
20	<1,0	<1,0
25	<1,0	<1,0
32	<1,0	<1,0
40	<1,0	<1,0
50	<1,0	<1,0
65	1,0	<1,0
80	1,7	1,0
100	2,2	1,8
125	4,0	2,5
150	7,0	4,0
200	13,0	9,0
250	25,0	16,0

I dati si basano su quanto segue.

- Manicotto: gomma naturale (tipo: 03X)
- Pressione di comando: 2,5 bar / pressione di esercizio: 0bar (atmosfera)
- Valvola pilota: NW 9mm / G1/4" (montata direttamente)

The details are based on the following:

- Sleeve: Natural rubber (type: 03X)
- Control pressure: 2,5 bar / Operation pressure: 0bar (Atm.)
- Solenoid Valve: DN 9mm / G1/4" (directly mounted)

I tempi di apertura e chiusura possono variare e dipendono da

- Pressione di esercizio nel manicotto
- Portata d'aria degli organi di comando
- Frequenza di clock (chiusura/apertura)
- Qualità della gomma del manicotto
- Temperatura
- Lunghezza della linea di comando

The opening and closing times may vary. These times depend on:

- Operation pressure inside the sleeve
- Airflow capacity of control device
- Number of cycles (open/close)
- Material of the sleeve
- Temperature
- Length of control line

Salvo modifiche tecniche

Technical details subject to change without notice.

AKO® Armaturen & Separations GmbH

D-65468 Trebur-Astheim • Adam-Opel-Str. 5 • Telefono: +49 (0) 61 47-9159-0 • Fax: +49 (0) 61 47-9159-59

Email: ako@ako-armaturen.de • Internet: www.valvola-a-manicotto.it